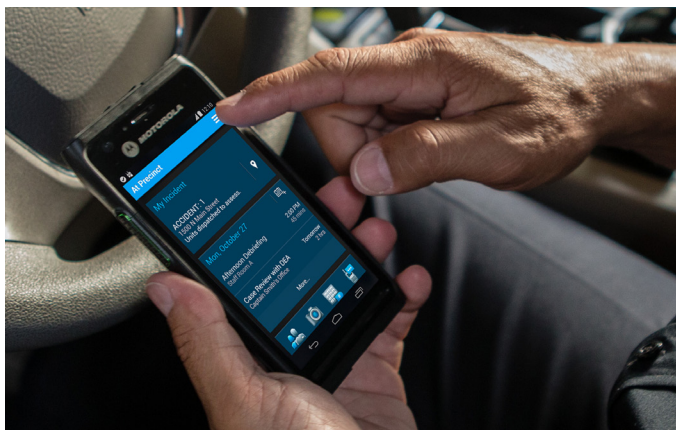




LEX L10 MISSION CRITICAL LTE HANDHELD

**UNIFIED INTELLIGENCE.
CENTRALISED CONTROL.**





LEX L10

UNIFIED INTELLIGENCE. CENTRALISED CONTROL.

The LEX L10 Mission Critical Handheld redefines the broadband experience for officers in the field. Created specifically for the demands of public safety, this device ensures optimal coverage on 4G LTE, 3G/UMTS and Quad Band GSM. It also supports IMS/VoLTE and IMS/SMS services on 4G LTE in addition to circuit switch voice and SMS.

Our purpose-built handheld leverages the core mission critical features of Motorola radios. It combines loud and clear audio, exceptional durability and excellent security.

With an intuitive user interface and a suite of public safety applications on a sleek and rugged smartphone form factor, officers can create more opportunities to quickly collaborate and share information across organisations.

WHAT TYPES OF DATA DEVICES DO YOU, OR
YOUR OFFICERS, USE ON THE JOB?

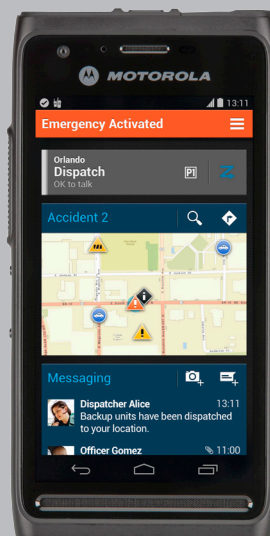
41%
USE PERSONAL
SMARTPHONES



MISSION CRITICAL SMART

KEY FEATURES

- Supports IMS/VoLTE and IMS/SMS services on 4G LTE in addition to circuit switch voice and SMS.
- Supports 4G LTE (Bands 3, 4, 5, 7, 8, 20, 26, 28), 3G UTM (Bands 1, 2, 4, 5, 8) and Quad Band GSM (850 MHz, 900 MHz, 1800 MHz, and 1900 MHz)
- FIPS 140-2 level 3 hardware encryption
- IP67 and MIL-STD 810G rated durability
- 4.7" touch display
- Dedicated push-to-talk button
- APX audio quality at 100+ phon
- Standard and high-capacity removable battery options
- Covert operation mode
- WiFi® connectivity
- Mission critical Bluetooth 4.0
- Public safety applications
- Google Mobility Services (Optional)





THE POWER OF PERFORMANCE

Like the Motorola radios relied on by emergency services worldwide, every feature and function of the LEX L10 was designed to endure the toughest conditions – from purpose-built ergonomics to best-in-class audio.

Its no-slip grip textured housing makes it easy to use with one hand. A dedicated push-to-talk (PTT) button initiates fast voice calling. Ramps on both sides help officers quickly locate the PTT button, while a green ring around it provides an extra visual cue, especially in low light.

With two powerful 1-watt speakers in front and triple microphones that cancel out noise and echoes, your personnel can hear clearly from any angle, in any environment.

- 4.7" outdoor visible touch screen display
- Ultra-rugged, IP67 and MIL-STD rated for harsh environments
- Prominent button for fast push-to-talk
- Best-in-class audio
- Removable battery cover

PROTECT COMMUNICATIONS FROM BEING COMPROMISED

Typical software encryption applications have lower levels of key strength which can make devices vulnerable to cyber criminals. The LEX L10 delivers an added layer of integrated hardware encryption to maximise security for voice and data in transit.

The CRYPTR micro FIPS 140-2 Level 3 hardware security module provides hardware tamper protection for keys, tokens, and certificates while performing high assurance cryptographic operations for applications. The LEX L10 is also equipped with Security Enhanced (SE) Android, secure boot and application white-listing to protect the data at rest from cyber threats.

- FIPS 140-2 Level 3 compliant security
- Security Enhanced (SE) Android, secure boot and application white-listing
- Security Management Services: Mobile VPN, certificate management, key management, device management, and identity management

ACCESS VOICE AND DATA, SIMULTANEOUSLY

Seamless connectivity and coverage for data sharing is increasingly critical in operations. The LEX L10 can connect to other networks, including carrier 4G LTE, 3G/UMTS and Quad Band GSM. It also supports IMS/VoLTE and IMS/SMS services on 4G LTE in addition to circuit switch voice and SMS. This assures voice and data is available at all times.

The LEX L10 can operate in covert mode and be securely touch-paired with Motorola radios via and accessories Mission Critical Bluetooth®. This enables personnel to remotely control their radio's zones, channels, volume, emergency and more. The LEX L10 can also act as a mobile hotspot for WiFi enabled devices.

- 4G LTE, 3G/UMTS and Quad Band GSM. It also supports IMS/VoLTE and IMS/SMS services on 4G LTE in addition to circuit switch voice and SMS.
- Covert Mode enables discreet, low-profile operation during surveillance missions at night
- Bluetooth 4.0 and WiFi 802.11n with Miracast enables connectivity

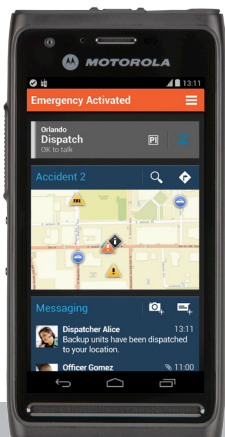
LEVERAGE GOOGLE-POWERED INTELLIGENCE

The LEX L10 is equipped with Google Mobility Services (GMS), offering the best of Google and Android to responders via the Google Play store. Personnel can download and access familiar applications and services including Gmail, Google Chrome, Google Maps, as well as Motorola's Public Safety Applications. With the LEX L10, you have the flexibility to prevent unauthorised applications from being downloaded so security is never compromised.

PUBLIC SAFETY APPLICATIONS DELIVER MISSION CRITICAL INTELLIGENCE

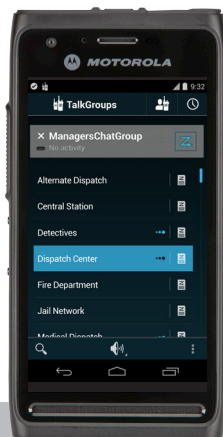
The LEX L10 supports a suite of public safety applications designed to leverage mission critical intelligence in the field. Motorola's application developers are building public safety applications that improve situational awareness, deter crime and allows officers to better connect with citizens. We work with customers to develop applications that automate manual processes, maximise report accuracy and minimise the time to process misdemeanors. As a result, officers can spend more time on patrol and less time doing paperwork.

PUBLIC SAFETY APPLICATIONS	SITUATIONAL AWARENESS	SECURITY	TEAM COMMUNICATIONS	WORKFORCE EFFICIENCY
CommandCentral Streaming	●			
Public Safety Experience (PSX) Mapping	●			
eTwist	●			
Neon Indoor Location Service	●			
Mobile VPN		●		
Identity Management		●		
Public Safety Experience (PSX) Messaging			●	
WAVE Mobile Communicator PTT			●	
SceneDoc				●
Dforce				●
Touch Mobile				●



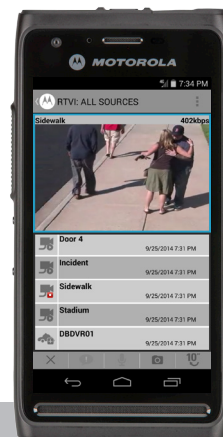
PSX MESSAGING AND MAPPING

Increase situational awareness with a Public Safety grade LMR and LTE instant messaging solution.



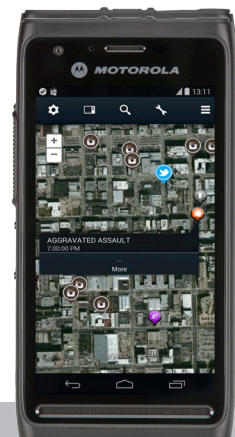
WAVE WORK GROUP COMMUNICATIONS

Connect and collaborate seamlessly voice communications across Land Mobile Radio (LMR) systems and broadband networks.



COMMANDCENTRAL STREAMING

Delivers high-quality video between Crime Centres, Dispatch and first responders to enhance situational awareness.



COMMANDCENTRAL INFORM

Improve response time and situational awareness by accessing real-time information from multiple databases on a tailored map.

THE ART OF MISSION CRITICAL DESIGN

The LEX L10 Mission Critical LTE Handheld delivers an exceptional combination of rugged hardware, powerful software and broadband connectivity.



PRODUCT DATA SHEET
LEX L10 MISSION CRITICAL LTE HANDHELD

4G/LTE

Release	3GPP Release 9
Bands	3, 4, 5, 7, 8, 20, 26, 28
Output Power	23 dBm +/- 2 dB (UE power class 3)
Bandwidth	Up to 20 MHz Broadband data throughput depends on network conditions

3G

Standards	HSPA +/UMTS
Bands	1, 2, 4, 5, 8

2G

Standards	GSM/GPRS/EDGE
Frequencies	850 MHz, 900 MHz, 1800 MHz, 1900 MHz

WI-FI

Operating Band	2.4 GHz, 5 GHz
Standards	802.11 a/b/g/n

PERSONAL AREA NETWORKS

Bluetooth	Bluetooth 4.0 Low Energy (LE) + Enhanced Data Rate (EDR) Mission Critical Wireless Bluetooth Max throughput 2.1 Mbps A2DP Stereo Profile
-----------	---

GPS

Location Services	Standalone GPS Assisted GPS (aGPS)
-------------------	---------------------------------------

DEVICE MANAGEMENT

Remote management and configuration	Supports OMA-DM (Open Mobile Alliance Device Management)
-------------------------------------	--

VIDEO AND IMAGING

Supported Formats	H.263, H.264, MPEG-4 SP, VP8, JPEG (.jpg), GIF (.gif), PNG (.png), BMP (.bmp), WebP (.webp) Formats supported for playback, streaming and recording
Supported File Types	3GPP (.3gp), MPEG-4 (.mp4), WebM (.webm), (.mkv)
Video Recording Quality	1080p HD up to 30 frames per second (fps)

Note: Video and images are time stamped for evidence documentation

AUDIO

Supported Formats	MP3, WAVE, AAC, AMR-NB, AMR-WB, FLAC, MIDI, Vorbis
Supported File Types	MP3 (.mp3), WAVE (.wav), 3GPP (.3gp), MPEG-4 (.mp4, m4a), ATDS raw AAC (.aac), MPEG-TS (.ts), FLAC (.flac), MIDI (.mid, .xmf, .mxmf), RTTTL/RTX (.rtttl, .rtx), OTA (.ota), iMelody (.imy), Ogg (.ogg), Matroska (.mkv)
Output	Dual 1 Watt Front-Facing Speakers, 106 dB Sound Pressure Level (SPL) 3.5 mm audio jack (stereo) Bluetooth (A2DP stereo)
Input	Triple Noise and Echo Cancelling Microphones

HARDWARE

Processor	2.3 GHz Quad Core Processor Qualcomm MSM8974
Display	4.7" 720p HD (720X1280) Capacitive, touch screen
Memory	2 GB RAM 16 GB eMMC Expandable to 64GB with microSD™ card
Camera	Rear 8MP Camera Auto Focus High-Output LED Flash Digital Zoom Front 2MP Camera
Sensors	Proximity Sensor Ambient Light Sensor Accelerometer Barometer E-Compass
Ports	USB 2.0 High-Speed 3.5 mm Audio Jack (stereo) Accessory/Charging Port
Battery	Standard - 2280 mAh, 10 hours High Capacity - 4560 mAh, 20 hours

PHYSICAL

Dimensions (H x W x D)	5.62 x 2.85 x .547 in 143 x 72.6 x 13.9 mm
Weight	195 g including standard battery
Durability	Continues to run after multiple drops to concrete from a height of 48 inches (121 cm) Drop tested using MIL-STD-810G Method 516.6, Procedure IV IP67 (1 meter water immersion up to 30 minutes)
Operating Temperature	14°F to 131°F (-10°C to +55°C)
Storage Temperature	-22°F to 149°F (-30°C to +65°C)

SOFTWARE

Operating System	Android™ KitKat 4.4.4
User Interface	Public Safety Experience (PSX) Software
Messaging	SMS/MMS Email (Corporate Sync, POP3, IMAP, Push Email)
Web	Android supported web browser

QUICK ACCESS LEATHER HOLSTER

Dimensions (H x W x D)	5.7 x 3.5 x 2.0 in (145 x 90 x 50 mm)
------------------------	--

PRODUCT DATA SHEET
LEX L10 MISSION CRITICAL LTE HANDHELD

GENERAL ACCESSORIES

	Desktop Cradle	Impact-rated Vehicle Cradle
PHYSICAL		
Dimensions (H x W x D)	6.0 x 5.0 x 3.5 in (152 x 128 x 89 mm)	6.1 x 3.0 x 2.2 in (155 x 76 x 56 mm)
Weight	12.8 oz (363 g)	4.8 oz (135 g)
ENVIRONMENTAL SPECIFICATION		
Operating Temperature	32°F to 113°F (0°C to +45°C)	-4°F to 131°F (-20°C to +55°C)
Storage Temperature	-40° F to 158°F (-40°C to 70°C)	-40° F to 185°F (-40°C to +85°C)
Humidity	95% at 113°F (45°C) for 8 hours (non-condensing)	95% at 131°F (55°C) for 8 hours (non-condensing)
DURABILITY		
Salt Fog	Yes	Yes
Vibration	Yes	Yes
Drop	Yes	Yes
Shock (Functional)	Yes	Yes
Shock (Crash Hazard)		Yes, MIL-STD-810G, 75G impact
ESD	Yes	Yes
Solar Radiation		Yes
Liquid Resistance	Yes	Yes
SAFETY REGULATORY		
Electrical Safety	US: UL60950	US: UL60950
EMI/RFI	FCC part 15, Subpart B, Class B	
ANSI C63.4 2009	FCC part 15, Subpart B, Class B	
ANSI C63.4 2009		
Flammability	ANSI/UL-94 and ASTM Standards	ANSI/UL-94 and ASTM Standards
ELECTRICAL		
Power Supply	External power supply input 100-240VAC output 5.0VDC 1.2A	12V-24V, 5.0VDC, 1.2A
Power Input	5.0 VDC, 1.2A	5.0 VDC, 1.2A
DC Output	5.0VDC	5.0VDC
Power On	With device insertion	With device insertion
OPTIONAL ACCESSORIES		
Vehicle Ram® Mount Kit		

Specifications subject to change.

LEX L10 ACCESSORIES

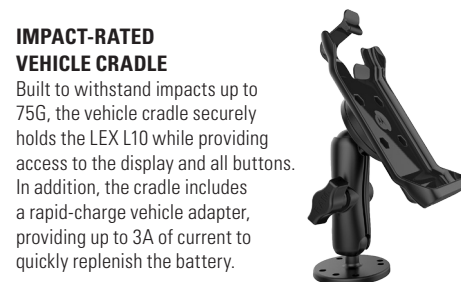
QUICK-ACCESS LEATHER HOLSTER

Designed to meet public safety specifications, the leather holster securely holds the LEX L10 Mission Critical Handheld while also providing quick "eyes-off" volume and dedicated push-to-talk buttons.



DESKTOP CRADLE

Continue to use the LEX L10 screen while conveniently charging it in the rugged desktop cradle which is able to withstand spills, drops and vibration making it suitable for both the desktop and a command vehicle. A USB 2.0 interface enables quick data synchronisation with a desktop PC.



IMPACT-RATED VEHICLE CRADLE

Built to withstand impacts up to 75G, the vehicle cradle securely holds the LEX L10 while providing access to the display and all buttons. In addition, the cradle includes a rapid-charge vehicle adapter, providing up to 3A of current to quickly replenish the battery.



MOTOROLA
LEX L10
MISSION CRITICAL
LTE HANDHELD

For more information, please visit: www.motorolasolutions.com/LEXL10

Motorola Solutions, Inc. 1301 E. Algonquin Road, Schaumburg, Illinois 60196 U.S.A.

MOTOROLA, MOTO, MOTOROLA SOLUTIONS and the Stylised M Logo are trademarks or registered trademarks of Motorola Trademark Holdings, LLC and are used under license. All other trademarks are the property of their respective owners. ©2016 Motorola, Inc. All rights reserved. 03-2016

